



USER GUIDE

LG-X230YK

About this user guide

Thank you for choosing this LG product. Please carefully read this user guide before using the device for the first time to ensure safe and proper use.

- Always use genuine LG accessories. The supplied items are designed only for this device and may not be compatible with other devices.
- This device is not suitable for people who have a visual impairment due to the touchscreen keyboard.
- Descriptions are based on the device default settings.
- Default apps on the device are subject to updates, and support for these apps may be withdrawn without prior notice. If you have any questions about an app provided with the device, please contact a LG Service Centre. For user-installed apps, please contact the relevant service provider.
- Modifying the device's operating system or installing software from unofficial sources may damage the device and lead to data corruption or data loss. Such actions will violate your LG licence agreement and void your warranty.
- Some content and illustrations may differ from your device, depending on the region, service provider, software version, or OS version, and are subject to change without prior notice.
- Software, audio, wallpaper, images, and other media supplied with your device are licenced for limited use. If you extract and use these materials for commercial or other purposes, you may be infringing copyright laws. As a user, you are fully responsible for the illegal use of media.
- Additional charges may incur for data services, such as messaging, uploading, downloading, auto-syncing and location services. To void additional charges, select a data plan suitable to your needs. Contact your service provider to obtain additional details.

Instructional notices



WARNING: Situations that could cause injury to the user and third parties.



CAUTION: Situations that may cause minor injury or damage to the device.



NOTE: Notices or additional information.

Table of contents

5 Guidelines for safe and efficient use

01

Custom-designed Features

- 14 KnockON
- 15 Gesture shot

02

Basic Functions

- 17 Product components and accessories
- 18 Parts overview
- 20 Turning on or off the power
- 21 Installing the SIM card and battery
- 24 Charging the battery
- 25 Optimizing battery life
- 26 Inserting the memory card
- 27 Removing the memory card
- 27 Touch screen
- 31 Home screen
- 36 Screen lock
- 37 Device encryption
- 37 Taking screenshots
- 38 Entering text

03

Useful Apps

- 41 Installing and uninstalling apps
- 42 Phone
- 44 Messaging
- 45 Camera
- 48 Gallery
- 50 File Manager
- 50 Clock
- 51 Calculator
- 52 Sound Recorder
- 52 FM Radio
- 52 Downloads
- 53 E-mail
- 54 Contacts
- 56 Calendar
- 57 Google apps

04

Phone Settings

- 60 Settings
- 60 Wireless & networks
- 65 Device
- 68 Personal
- 71 System

05

Appendix

- 74 LG Language Settings
- 74 Phone software update
- 75 FAQ
- 78 Anti-Theft Guide
- 79 More information

Guidelines for safe and efficient use

Please read these simple guidelines. Not following these guidelines may be dangerous or illegal.

Should a fault occur, a software tool is built into your device that will gather a fault log. This tool gathers only data specific to the fault, such as signal strength, cell ID position in sudden call drop and applications loaded. The log is used only to help determine the cause of the fault. These logs are encrypted and can only be accessed by an authorised LG Repair centre should you need to return your device for repair.

Important information about the device

- Device apps and services are subject to change or cancellation without notice, depending on the provider's situation and the software version.
- When the device is turned on for the first time, an initial configuration takes place. The first booting time may be longer than usual.

Read before use

- To purchase optional items, contact the LG Customer Information Centre for available dealers.
- The appearance and specifications of the device are subject to change without notice.
- Do not use LG products for other purposes than those originally intended. Using non-certified apps or software may damage the device and this is not covered by warranty.

Exposure to radio frequency energy

Radio wave exposure and Specific Absorption Rate (SAR) information.

This device has been designed to comply with applicable safety requirements for exposure to radio waves. These requirements are based on scientific guidelines that include safety margins designed to assure the safety of all persons, regardless of age and health.

- The radio wave exposure guidelines employ a unit of measurement known as the Specific Absorption Rate, or SAR. Tests for SAR are conducted using standardised methods with the device transmitting at its highest certified power level in all used frequency bands.
- While there may be differences between the SAR levels of various LG device models, they are all designed to meet the relevant guidelines for exposure to radio waves.
- The SAR limit recommended by the International Commission on Non-Ionizing Radiation Protection (ICNIRP) is 2 W/kg averaged over 10 g of tissue.
- The highest SAR value for this model tested for use at the ear is 0.500 W/kg (10 g) and when worn on the body is 1.360 W/kg (10 g).
- This device meets RF exposure guidelines when used either in the normal use position against the ear or when positioned at least 5 mm away from the body. When a carry case, belt clip or holder is used for body-worn operation, it should not contain metal and should position the product at least 5 mm away from your body. In order to transmit data files or messages, this device requires a quality connection to the network. In some cases, transmission of data files or messages may be delayed until such a connection is available. Ensure the above separation distance instructions are followed until the transmission is completed.

Product care and maintenance

- Always use genuine LG batteries, chargers and accessories approved for use with this particular device model. The use of any other types may invalidate any approval or warranty applying to the device and may be dangerous.
- Some contents and illustrations may differ from your device without prior notice.
- Do not disassemble this unit. Take it to a qualified service technician when repair work is required.

- Repairs under warranty, at LG's discretion, may include replacement parts or boards that are either new or reconditioned, provided that they have functionality equal to that of the parts being replaced.
- Keep away from electrical appliances such as TVs, radios and personal computers.
- The unit should be kept away from heat sources such as radiators or cookers.
- Do not drop.
- Do not subject this unit to mechanical vibration or shock.
- Switch off the device in any area where you are required to by special regulations. For example, do not use your device in hospitals as it may affect sensitive medical equipment.
- Do not handle the device with wet hands while it is being charged. It may cause an electric shock and can seriously damage your device.
- Do not charge a handset near flammable material as the handset can become hot and create a fire hazard.
- Use a dry cloth to clean the exterior of the unit (do not use solvents such as benzene, thinner or alcohol).
- Do not charge the device when it is on soft furnishings.
- The device should be charged in a well ventilated area.
- Do not subject this unit to excessive smoke or dust.
- Do not keep the device next to credit cards or transport tickets; it can affect the information on the magnetic strips.
- Do not tap the screen with a sharp object as it may damage the device.
- Do not expose the device to liquid or moisture.
- Use accessories like earphones cautiously. Do not touch the antenna unnecessarily.
- Do not use, touch or attempt to remove or fix broken, chipped or cracked glass. Damage to the glass display due to abuse or misuse is not covered under the warranty.
- Your device is an electronic device that generates heat during normal operation. Extremely prolonged, direct skin contact in the absence of adequate ventilation may result in discomfort or minor burns. Therefore, use care when handling your device during or immediately after operation.

- If your device gets wet, immediately unplug it to dry off completely. Do not attempt to accelerate the drying process with an external heating source, such as an oven, microwave or hair dryer.
- The liquid in your wet device, changes the colour of the product label inside your device. Damage to your device as a result of exposure to liquid is not covered under your warranty.

Efficient device operation

Electronics devices

All devices may receive interference, which could affect performance.

- Do not use your mobile phone near medical equipment without requesting permission. Please consult your doctor to determine if operation of your phone may interfere with the operation of your medical device.
- Pacemaker manufacturers recommend that you leave at least 15 cm of space between other devices and a pacemaker to avoid potential interference with the pacemaker.
- This device may produce a bright or flashing light.
- Some hearing aids might be disturbed by devices.
- Minor interference may affect TVs, radios, PCs etc.
- Use your device in temperatures between 0 °C and 40 °C, if possible. Exposing your device to extremely low or high temperatures may result in damage, malfunction, or even explosion.

Road safety

Check the laws and regulations on the use of devices in the area when you drive.

- Do not use a hand-held device while driving.
- Give full attention to driving.
- Pull off the road and park before making or answering a call if driving conditions so require.
- RF energy may affect some electronic systems in your vehicle such as car stereos and safety equipment.
- When your vehicle is equipped with an air bag, do not obstruct with installed or portable wireless equipment. It can cause the air bag to fail or cause serious injury due to improper performance.

- If you are listening to music whilst out and about, please ensure that the volume is at a reasonable level so that you are aware of your surroundings. This is of particular importance when near roads.

Avoid damage to your hearing



To prevent possible hearing damage, do not listen at high volume levels for long periods.

Damage to your hearing can occur if you are exposed to loud sound for long periods of time. Make sure that you do not turn on or off the handset close to your ear. Also, make sure that music and call volumes are set to a reasonable level.

- When using headphones, turn the volume down if you cannot hear the people speaking near you, or if the person sitting next to you can hear what you are listening to.



- Excessive sound pressure from earphones and headphones can cause hearing loss.

Glass Parts

Some parts of your device are made of glass. This glass could break if your device is dropped on a hard surface or receives a substantial impact. If the glass breaks, do not touch or attempt to remove it. Stop using your device until the glass is replaced by an authorised service provider.

Blasting area

Do not use the device where blasting is in progress. Observe restrictions and follow any regulations or rules.

Potentially explosive atmospheres

- Do not use your device at a refueling point.
- Do not use near fuel or chemicals.
- Do not transport or store flammable gas, liquid or explosives in the same compartment of your vehicle as your device or accessories.

In aircraft

Wireless devices can cause interference in aircraft.

- Turn your device off before boarding any aircraft.
- Do not use it on the ground without permission from the crew.

Children

Keep the device in a safe place out of the reach of small children. It includes small parts which may cause a choking hazard if detached.

Emergency calls

Emergency calls may not be available on all mobile networks. Therefore you should never depend solely on your phone for emergency calls. Check with your local service provider.

- Use your mobile phone to call emergency services for yourself or others in the case of fire, traffic accident or medical emergencies;
 - Australia Dial (0-0-0)
 - New Zealand Dial (1-1-1)
 - International Dial (1-1-2)
 - other local emergency number.

Remember, it is a free call when dialling emergency services from your mobile phone in Australia.

Battery information and care

- You do not need to completely discharge the battery before recharging. Unlike other battery systems, there is no memory effect that could compromise the battery's performance.
- Use only LG batteries and chargers. LG chargers are designed to maximise the battery life.
- Do not disassemble or short-circuit the battery.
- Keep the metal contacts of the battery clean.
- Replace the battery when it no longer provides acceptable performance. The battery pack may be recharged hundreds of times before it needs replacing.
- Recharge the device if it has not been used for a long time to maximise usability.

- Do not expose the battery charger to direct sunlight or use it in high humidity, such as in the bathroom.
- Do not leave the battery in hot or cold places, as this may deteriorate battery performance.
- Risk of explosion if battery is replaced by an incorrect type. Dispose of used batteries according to the instructions.
- If you need to replace the battery, take it to the nearest authorised LG Electronics service point or dealer for assistance.
- Always unplug the charger from the wall socket after the device is fully charged to save unnecessary power consumption of the charger.
- Actual battery life will depend on network configuration, product settings, usage patterns, battery and environmental conditions.
- Make sure that no sharp-edged items such as animal's teeth or nails, come into contact with the battery. This could cause a fire.

Driver Safety Tips

Your mobile telephone gives you the powerful ability to communicate almost anywhere, anytime, but an important responsibility accompanies the benefits of mobile phones, one that every user must uphold. When driving a car, driving is your first responsibility. When using your mobile phone behind the wheel of a car, practice good common sense and remember the following tips:

- Use a hands free device to add an additional layer of convenience and safety to your wireless phone with one of the many hands free accessories available today.
- Let the person you are speaking with know you are driving; if necessary, suspend the call in heavy traffic or hazardous weather conditions. Rain, sleet, snow, ice and even heavy traffic can be hazardous.
- Do not take notes or look up phone numbers while driving. Typing up a "to do" list or flipping through your address book takes attention away from your primary responsibility of driving safely.
- Place calls when you are not moving or before pulling into traffic. Try to plan calls when you will not be driving.
- Do not engage in stressful or emotional conversations that may be distracting. Make people you are talking with aware you are driving and suspend conversations that have the potential to divert your attention from the road.
- Use your mobile phone to help others in emergencies. If you see an auto

accident, crime in progress or other serious emergency where lives are in danger, call the emergency number, as you would want others to do for you.

- If you see a broken down vehicle posing no serious hazard, a broken traffic signal, a minor traffic accident where no one appears injured, or a vehicle you know to be stolen, call roadside assistance, local traffic authority or police station.

Precautions when using SIM cards

- Do not insert the SIM card into the device with the label or seal attached. This may cause damage.
- Do not remove the SIM card while using the device. This may damage the SIM card or the system.
- Take extra care to ensure that the SIM card is not scratched, bent, or damaged by magnet. This may delete files saved on the SIM card or cause device malfunctions.

Precautions when using memory cards

- Make sure that the orientation is correct when inserting the memory card. Inserting using the wrong orientation may damage the card.

Securing personal information

- Make sure to protect your personal information to prevent data leakage or misuse of sensitive information.
- Always back up important data while using the device. LG is not responsible for any data loss.
- Make sure to back up all data and reset the device when disposing of the device to prevent any misuse of sensitive information.
- Read the permission screen carefully while downloading applications.
- Be cautious using the applications that have access to multiple functions or to your personal information.
- Check your personal accounts regularly. If you find any sign of misuse of your personal information, ask your service provider to delete or change your account information.
- If your device is lost or stolen, change the password of your account to secure your personal information.
- Do not use applications from unknown sources.



01

Custom-designed Features

KnockON

You can turn the screen on or off by double-tapping the screen.



- This option is available only on the Home screen provided by LG. It may not function properly on a custom launcher or on the Home screen installed by the user.
- When tapping the screen, use your fingertip. Do not use a fingernail.
- To use the KnockON feature, make sure that the proximity/light sensor is not blocked by a sticker or any other foreign substance.

Turning on the screen

Double-tap the middle of the screen.

- Tapping the top or bottom of the screen may decrease the recognition rate.

Turning off the screen

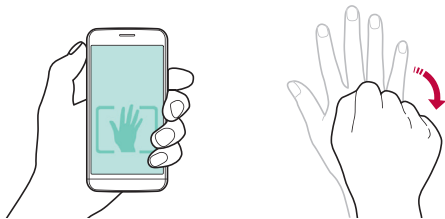
Double-tap the status bar, an empty area on the Home screen or the Lock screen.

Gesture shot

You can take selfies by using gestures.

Show your palm to the front camera and then clench your fist.

- In three seconds, a photo is taken.



- An alternative way to take gesture shots is to clench your fist and then open it towards the front camera.
- Make sure that your palm and fist are within the reference line so that the camera can detect them.



02

Basic Functions

Product components and accessories

Make sure that none of the following items are missing:

- Device
- Battery
- Stereo headset
- USB cable
- Charger
- Quick Start Guide

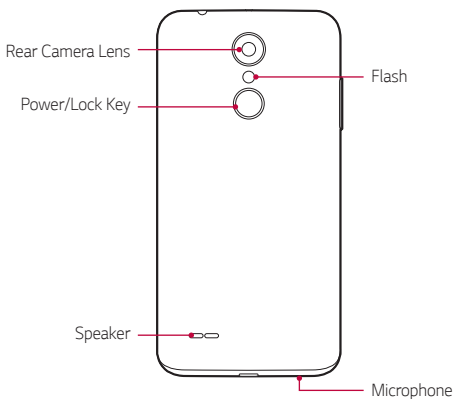
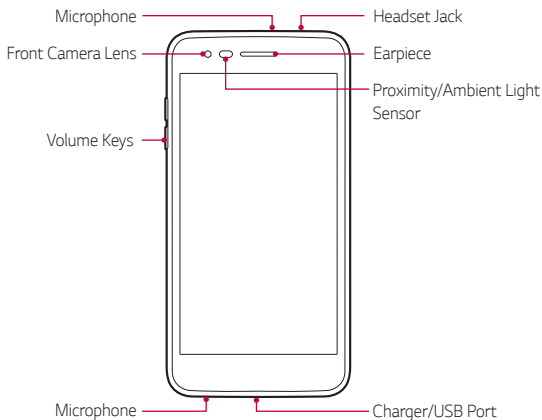


- The items described above may be optional.
- The items supplied with the device and any available accessories may vary depending on the area and service provider.
- Always use genuine LG Electronics accessories. Using accessories made by other manufacturers may affect your device's call performance or cause malfunctions. This may not be covered by LG's repair service.



- If any of these basic items are missing, contact the dealer from which you purchased your device.
- To purchase additional basic items, contact the LG Customer Service Centre.
- To purchase optional items, contact the LG Customer Service Centre for available dealers.
- Some items in the product box are subject to change without notice.
- The appearance and specifications of your device are subject to change without notice.

Parts overview



- Proximity/Ambient Light Sensor
 - Proximity sensor: The proximity sensor turns off the screen and disables touch functionality when the device is in close proximity to the human body. It turns the screen back on and enables touch functionality when the device is outside a specific range.
 - Ambient light sensor: The ambient light sensor analyses the ambient light intensity when the auto-brightness control mode is turned on.
- Volume Keys
 - Adjust the Volume for ringtones, calls or notifications.
 - Gently press a Volume key to take a photo.
- Power/Lock Key
 - Briefly press the key when you want to turn the screen on or off.
 - Press and hold the key when you want to select a power control option.



- Some functions may be restricted for access, depending on the device specifications.
- Do not put heavy objects on the device or sit on it, as this may damage the screen.
- Screen-protective film or accessories may interfere with the proximity sensor.
- If your device is wet or is being used in a humid place, the touch sensor or buttons may not function properly.

Turning on or off the power

Turning on the power

When the power is turned off, press and hold the Power/Lock Key.



- When the device is turned on for the first time, initial configuration takes place. The first booting time for the smart phone may be longer than usual.

Turning off the power

Press and hold the Power/Lock Key, then select **Power off**.

Power control options

Tap and hold the Power/Lock Key, then select an option.

- **Power off:** Turn off the device.
- **Restart:** Restart the device.

Installing the SIM card and battery

Insert the SIM card provided by your service provider, and the included battery.

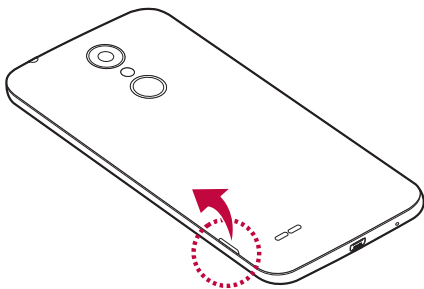


- Do not insert a memory card into the SIM card slot. If a memory card happens to be lodged in the SIM card slot, take the device to a LG Service Centre to remove the memory card.

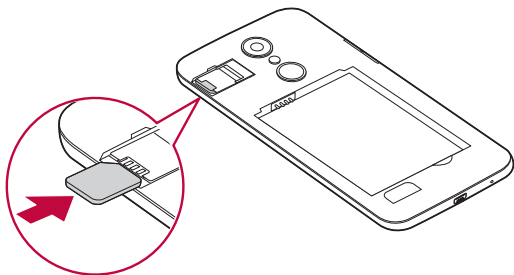


- Only the Nano SIM cards work with the device.

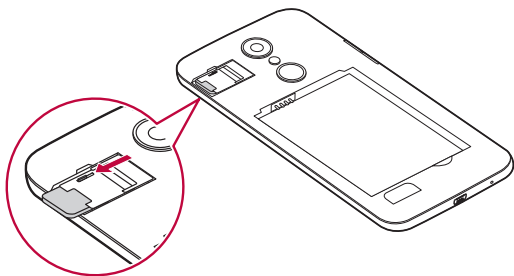
- 1 To remove the back cover, hold the device firmly in one hand. With your other hand, lift off the back cover with your thumbnail as shown in the figure.



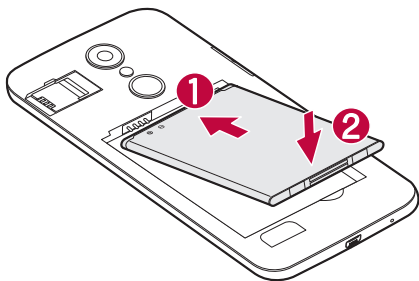
- 2 Slide the SIM card into the SIM card slot as shown in the figure. Make sure the gold contact area on the card is facing downward.



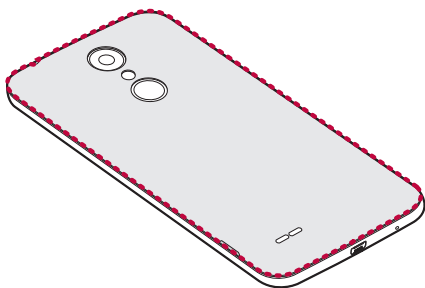
- To remove the SIM Card from Slot 1, slide the pin at the top to the left.



3 Insert the battery.



4 To replace the cover onto the device, align the back cover over the battery compartment and press it down until it clicks into place.



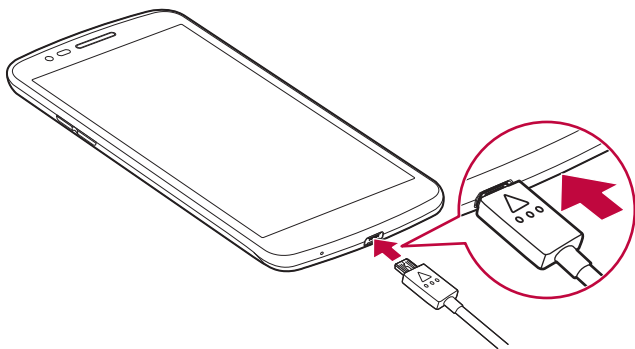
Charging the battery

Charge the battery before using it for first time. Use a charger to charge the battery. A computer can also be used to charge the battery by connecting the device to it using a USB cable.



- Make sure to use an LG-approved charger and charging cable. Charging the battery with a third-party charger may cause the battery to explode or may damage the device.

The charger connector is located at the bottom of the device. Insert a USB cable into the device, insert the other end into the charger and plug the charger into a power outlet.



Optimizing battery life

Extend your battery's power by turning off features that you do not need to run constantly in the background. You can monitor how applications and system resources consume battery power.

Extending your device battery life

- Turn off radio communications when you are not using. If you are not using Wi-Fi, Bluetooth® or GPS, turn them off.
- Reduce screen brightness and set a shorter screen timeout.
- Turn off automatic syncing for Gmail, Calendar, Contacts and other applications.
- Some applications you download may consume battery power.
- While using downloaded applications, check the battery charge level.

Inserting the memory card

The device supports up to a 32GB microSD. Some memory cards may not be compatible with your device, depending on the memory card manufacturer and type.

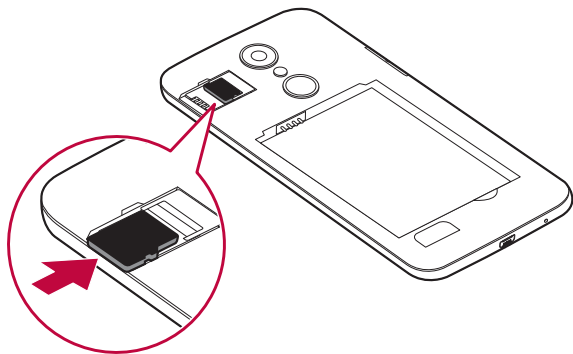


- Some memory cards may not be fully compatible with the device. If you use an incompatible card, it may damage the device or the memory card, or corrupt the data stored in it.



- If you write and erase data too frequently, it will shorten the lifespan of memory cards.




- 1 Remove the back cover.
- 2 Insert a memory card with the gold-coloured contacts facing downwards.



- 3 Replace the back cover.

Removing the memory card

Before removing the memory card, first unmount it for safe removal.

- 1 Tap  >  > **Settings** > **Storage** > .
- 2 Remove the back cover and pull out the memory card.



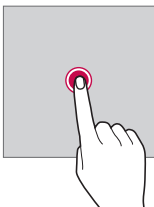
- Do not remove the memory card while the device is transferring or accessing information. This may cause data to be lost or corrupted, or may damage the memory card or the device. LG is not responsible for losses that result from the abuse or improper use of memory cards, including the loss of data.

Touch screen

You can familiarise yourself with how to control your device by using touch screen gestures.

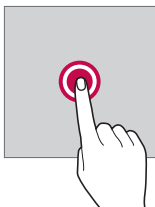
Tapping

Lightly tap with your fingertip to select or run an app or option.



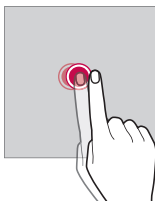
Tapping and holding

Tap and hold for several seconds to run a hidden function.



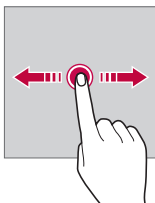
Double-tapping

Tap twice quickly to zoom in or out on a photo or map.



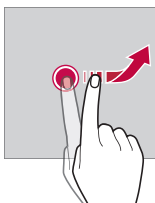
Swiping

Tap and hold an item, such as an app or widget, then swipe it to another location. You can use this gesture to move an item.



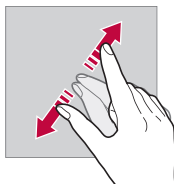
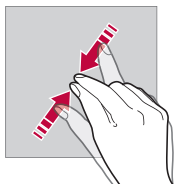
Flicking

Gently tap and hold on the screen, then flick left or right to quickly move to another panel.



Pinching and spreading

Pinch two fingers to zoom out such as on a photo or map. To zoom in, spread your fingers apart.




- Do not expose the touch screen to excessive physical shock. You might damage the touch sensor.



- A touch screen failure may occur if you use the device near a magnetic, metallic or conductive material.
- If you use the device under bright lights, such as direct sunlight, the screen may not be visible, depending on your position. Use the device in a shady location or a location with an ambient light that is not too bright and bright enough to read books.
- Do not press the screen with excessive force.
- Gently tap with your fingertip on the option you want.
- Touch control may not work properly if you tap while wearing a glove or by using the tip of your fingernail.
- Touch control may not work properly if the screen is moist or wet.
- The touch screen may not function properly if a screen-protective film or accessory is attached to the device.

Home screen

Home screen overview

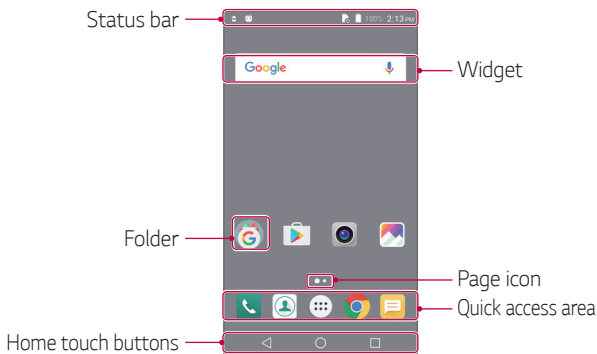
The Home screen is the starting point for accessing various functions and apps on your device. Tap  on any screen to directly go to the Home screen.

You can manage all apps and widgets on the Home screen. Swipe the screen left or right to view all installed apps at a glance.

To search for an app, use Google search.




Home screen layout

You can view all apps and organise widgets and folders on the Home screen.














- The Home screen may vary, depending on the service provider or software version.

- **Status bar:** View status icons, the time and the battery level.
- **Widget:** Add widgets to the Home screen to quickly access necessary information without bothering to run apps one by one.

- Folder: Create folders to group apps by your preferences.
- Page icon: View the total number of Home screen canvases and the currently displayed canvas which is highlighted.
- Quick access area: Fix main apps at the bottom of the screen so that they can be accessed from any Home screen canvas.
- Home touch buttons
 - : Return to the previous screen. Close the keypad or pop-up windows.
 - : Tap to go to the Home screen. To launch **Google**, press and hold.
 - : View a list of recently used apps or run an app from the list. In some apps, tapping and holding the button will access additional options.

Status icons

When there is a notification for an unread message, calendar event or alarm, the status bar displays the corresponding notification icon. Check your device's status by viewing notification icons displayed on the status bar.

- : No signal
- : Data is being transmitted over the network
- : Alarm is set
- : Vibrate mode is on
- : Bluetooth is on
- : Battery level
- : Flight mode is on
- : Missed calls
- : Wi-Fi is on
- : Hotspot is on
- : No SIM card

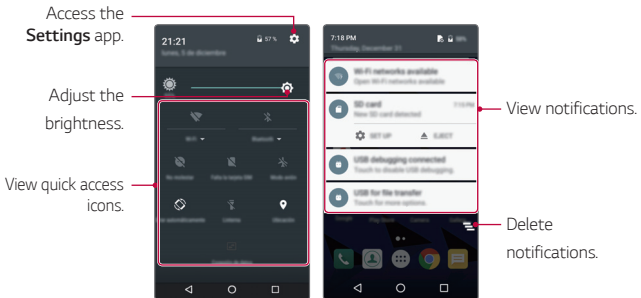


- Some of these icons may appear differently or may not appear at all, depending on the device's status. Refer to the icons according to the actual environment in which you are using the device.
- Displayed icons may vary, depending on the area or service providers.

Notifications panel

You can open the notifications panel by dragging the status bar downwards.



Use quick access icons in the notifications panel to easily and quickly turn a function on or off.



Switching the screen orientation

You can set the screen orientation to automatically switch, according to the device's orientation.

On the notification panel, tap **Auto-rotate** from the quick access icon list.

Alternatively, tap  >  > **Settings** > **Display** > **When device is rotated** and select **Rotate the contents of the screen**.



Editing the Home screen

On the Home screen, tap and hold on an empty space, then start the desired function.

- To rearrange the Home screen canvases, tap and hold on a canvas, then drag it to another location.
- To add widgets to the Home screen, tap **WIDGETS** and drag a widget to the Home screen.
- To change Home screen settings, tap **SETTINGS** and customise options.

Moving apps on the Home screen

On the Home screen, tap and hold an app, then drag it to another location.

- To keep frequently used apps at the bottom of the Home screen, tap and hold an app, then drag it to the quick access area at the bottom.
- To remove an icon from the quick access area, drag the icon to the Home screen.

Using folders from the Home screen

Creating folders

On the Home screen, tap and hold an app, then drag it over another app.

- A new folder is created and the apps are added to the folder.

Editing folders

On the Home screen, tap a folder and then run the desired function.

- To edit the folder name, tap the folder name.
- To remove an app from the folder, tap and hold the app and drag it to outside the folder. If only one app is left in the folder, the folder disappears automatically.

Screen lock

Screen lock overview

Your device's screen turns off and locks itself if you press the Power/Lock Key. This also happens after the device is left idle for a specified period of time.

If you press the Power/Lock Key when a screen lock is not set, the Home screen appears immediately.

To ensure security and prevent unwanted access to your device, set a screen lock.



- Screen lock prevents unnecessary touch input on the device screen and reduces battery consumption. We recommend that you activate the screen lock while not using the device.

Configuring screen lock settings

There are several options available for configuring the screen lock settings.

- 1 Tap > > **Settings** > **Security** > **Screen lock** and then select the method you prefer.
- 2 Customise lock settings:
 - **None**: Deactivate the screen lock function.
 - **Swipe**: Slide on the screen to unlock the screen.
 - **Pattern**: Draw a pattern to unlock the screen.
 - **PIN**: Enter a numeric password to unlock the screen.
 - **Password**: Enter an alphanumeric password to unlock the screen.



- If you incorrectly attempt to unlock the device 5 times, the screen is blocked for 30 seconds.

Device encryption

Encrypting your device

Data is encrypted before saving on the device to protect the data. It is possible to read, write and copy data even when device encryption is set. It is also possible to display a user confirmation prompt when the power is turned on by using lock settings while in lock screen mode.

Precautions for device encryption

You can use Secure start-up to increase your device's protection level.



- If Secure start-up is turned on and an incorrect password is entered more than a specified number of times, the device will automatically initialise.
- If you forget your decryption password, you must initialise the device to use it again. Initialisation will delete all data saved before initialisation.

Taking screenshots

You can take screenshots of the current screen you are viewing.

Via a shortcut

Press and hold the Power/Lock Key and the Volume Down (-) key at the same time for at least two seconds.

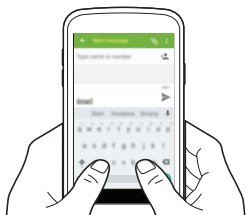
- Screenshots can be viewed from the **Screenshot** folder in the **Gallery**.

Entering text

Using Smart keyboard

You can use Smart keyboard to enter and edit text.

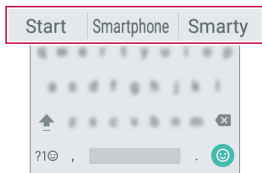
With Smart keyboard, you can view text as you type without bothering to alternate between the screen and a conventional keyboard. This allows you to easily find and correct errors when typing.



Suggesting words



Smart keyboard automatically analyses your usage patterns to suggest frequently used words as you type. The longer you use your device, the more precise the suggestions are.

- The selected word is automatically entered. You do not need to manually type every letter of the word.





Changing the keyboard

You can change the input language and the keyboard type for each language.

- 1 Tap  >  > **Settings** > **Language & input**.
- 2 Select a language and customise the keyboard type.

Copy and Paste

You can cut or copy text from an app, and then paste the text into the same app. Or, you can run other apps and paste the text into them.

- 1 Tap and hold around the text you want to copy or cut.
- 2 Drag  /  to specify the area to copy or cut.
- 3 Select either **CUT** or **COPY**.
 - Cut or copied text is automatically added to the clip tray.
- 4 Tap and hold the text input window, then select **PASTE**.



- If there is no item that has been copied or cut, the **PASTE** option will not appear.



03

Useful Apps

Installing and uninstalling apps

Installing apps

Access an app store to search and download apps.

- You can use **Play Store** or the app store provided by your service provider.



- Some app stores may require you to create an account and sign in.
- Some apps may charge fees.
- If you use mobile data, you may be charged for data usage, depending on your pricing plan.

Uninstalling apps

Uninstall apps that you no longer use from your device.



- Some apps cannot be uninstalled by users.

Uninstalling with the tap and hold gesture

- On the Home screen, tap and hold the app to uninstall, then drag it over **Uninstall** at the top of the screen.

Uninstalling by using the settings menu

Tap **○ > ⋮ > Settings > Apps**, select an app, then tap **UNINSTALL**.

Uninstalling apps from the Play Store





To uninstall an app, access the Play Store from which you download the app and uninstall it.

Phone

Voice call

Make a phone call by using one of the available methods, such as manually entering a phone number or making a call from the contact list or the list of recent calls.





Making a call from the keypad

- 1 Tap  >  > .
- 2 Make a call by using a method of your choice:
 - Enter a phone number and tap .
 - Search for a contact by tapping the initial letter of a contact name in the contact list.



- To enter "+" when making an international call, tap and hold number 0.
- The headsets will continue to play sound even in Speaker Mode.

Making a call from the contact list

- 1 Tap  >  > .
- 2 From the contact list, select a contact and tap .


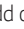


Answering a call

To answer a call, swipe  to right to answer an incoming call.

- When the stereo headset is connected, you can make calls by using the call/end button on the headset.

Rejecting a call


To reject an incoming call, swipe  to left to decline an incoming call.

- To send a rejection message, swipe  to up to send a rejection message.
- To add or edit a rejection message, tap  >  >  > **Settings** > **Quick responses**.
- When a call is coming in, you can press the Power/Lock Key or the volume key to switch to mute mode.




Viewing missed calls



If there is a missed call, the status bar at the top of the screen displays



To view missed call details, drag the status bar downwards. Alternatively, tap  >  > .

Viewing call records

To view recent call records, tap  >  > . Then, you can use the following functions:




- To view detailed call records, select a contact. To make a call to the selected contact, tap .
- To delete call records, tap **Call details** > .



- The displayed call duration may differ from the call charge. Consult with your service provider for more information.

Configuring call options

You can configure various call options.

- 1 Tap  > .
- 2 Tap  > **Settings** and then configure the options to suit your preferences.

Messaging

Sending a message

You can create and send messages to your selected contacts or all of your contacts using the Messaging app.



- Sending messages abroad may incur additional charges. Consult with your service provider for more information.

- 1 Tap > .
- 2 Tap .
- 3 Specify a recipient and create a message.
 - To attach files, tap .
 - To access optional menu items, tap .
- 4 Tap to send the message.

Reading a message

You can view exchanged messages organised by contact.

- 1 Tap > .
- 2 Select a contact from the message list.

Configuring messaging settings

You can change messaging settings to suit your preferences.

- 1 Tap > .
- 2 Tap > **Settings** from the message list.

Camera

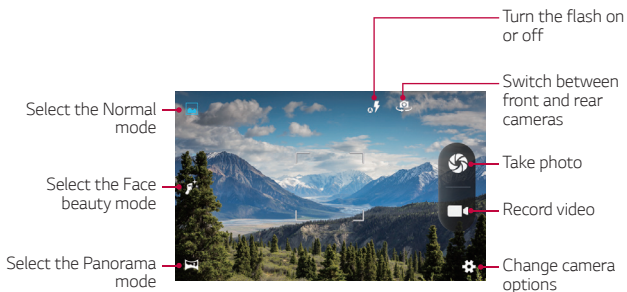
Starting the camera

You can take a photo or record a video to keep the memorable moments.

Tap  > .




- Before taking a photo, wipe the camera lens with a microfibre cloth. If your finger touches the camera lens, you may get blurry photos.
- If the battery level is lower than 5%, charge the battery before using the camera.
- Images included in this user guide may be different from the actual device.
- Photos and videos can be viewed or edited from **Gallery**.



Switching between cameras

You can switch between the front and rear cameras to suit your shooting environment.

On the camera screen, tap  to switch between the front and rear cameras.




- Use the front camera to take selfies.

Zoom in or out

You can use zoom in or out on the camera screen while taking a picture or recording a video.

On the camera screen, pinch or spread two fingers to zoom in or out.






Taking a photo

- 1 Select a shooting mode, and tap the subject to focus the camera on.
- 2 Tap  to take a photo.
Alternatively, press a volume key.






- When the screen is turned off or locked, start the camera by pressing and holding the Volume.

Recording a video

- 1 Select the Normal mode, and tap the subject to focus the camera on.
- 2 Tap 
 - To take a photo while recording a video, tap .
 - To pause the video recording, tap . To resume the video recording, tap .
- 3 Tap  to end the video recording.

Panorama

You can create a panoramic photo by moving the camera in one direction to photograph and stitch continuous shots of for a wide view.

- 1 In the Normal mode, tap .
- 2 Tap  and then slowly move the camera in one direction.
 - Move the device by following the direction of the arrow in the guideline.
- 3 Tap  to end shooting.



Burst shot

You can take continuous shots of photos to create moving pictures.

In the Normal mode, tap and hold .

- Continuous shots are taken at a fast speed while  is held down.



- Up to ten (10) continuous photos can be taken.

Taking selfies

You can use the front camera to view your face on the screen and take selfies.



- When using the front camera, you can change in camera options how selfies are taken.

Gallery

Gallery overview

You can view and manage photos and videos saved on your device.

1 Tap  >  > .

- Saved photos and videos are displayed by the folder.

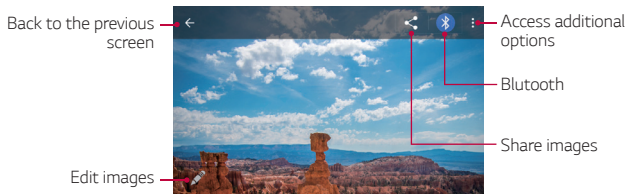
2 Tap a folder and select a file.

- View the selected file in full-screen mode.
- Swipe left or right on the displayed photo or video screen to view the previous or next file.




- Some file formats may not be supported, depending on the installed software.
- Some files may not be opened due to encoding.
- Files that exceed the size limit may cause an error.

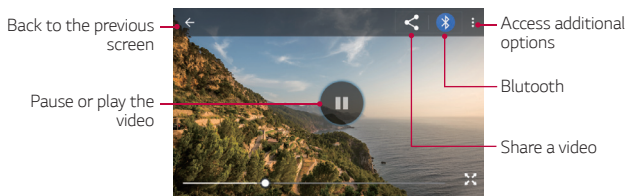
Viewing photos



Editing photos

- 1 While viewing a photo, tap .
- 2 Use a variety of effects and tools to edit the photo.
- 3 Tap **SAVE** to save changes.
 - The changes are overwritten to the original file.

Playing a video





Deleting files

You can delete files by using one of the following options:

- Tap and hold a file from the file list, then tap  > **Delete**.



Sharing files

You can share files by using one of the following options:

- While viewing a photo or video, tap  to share the file by using the method you want.
- Tap  from the file list to select files and share them using the method you want.

File Manager





You can view and manage files saved on your device or cloud.

- 1 Tap  >  > **File Manager**.
- 2 Select the desired storage location.

Clock

Alarm

You can set an alarm to trigger it at a specified time.

- 1 Tap  >  > **Clock** > .
- 2 Tap  to add a new alarm.
- 3 Configure the alarm settings and tap **OK**.



- If you select a previously set alarm, you can edit the alarm.
- To delete an alarm, tap  > .









Clock

You can view the current time in cities around the world.

- 1 Tap  >  > **Clock** > .
- 2 Tap  and add a city.









Timer

You can set the timer to trigger an alarm after a specified period of time.

- 1 Tap  >  > **Clock** > .
- 2 Set the time and tap 
 - To suspend the timer, tap . To resume the timer, tap .
 - To reset the timer settings, tap .
- 3 Tap  to reset the timer alarm.



Stopwatch

You can use the stopwatch to record a lap time.

- 1 Tap  >  > **Clock** > .
- 2 Tap  to initiate the stopwatch.
 - To record a lap time, tap .
- 3 Tap  to suspend the stopwatch.
 - To resume the stopwatch, tap .
 - To delete all the stopwatch records, tap .







Calculator

You can use two types of calculators: the simple calculator and the scientific calculator.

- Tap  >  > **Calculator**.
- To use scientific calculator, drag the slide bar located in the right side of the screen to the left.
 - To restart a calculation, touch and hold the **DEL** button.

Sound Recorder

You can record and save your voice or others' voices from important events. Recorded voice files can be played back or shared.

- 1 Tap  >  > **Sound Recorder**.
- 2 Tap .
 - To pause recording, tap .
- 3 Tap  to end recording.
 - The file is saved automatically and the pre-listen screen appears.
- 4 Tap  to play the recorded voice.

FM Radio

You can listen to FM radio.

Tap  >  > **FM Radio**.



- To use this app, first connect a headset to the device. The headset becomes the radio antenna.
- This option may not be supported, depending on the area.
- The headsets will continue to play sound even in Speaker Mode.

Downloads

You can view, delete or share files downloaded via the Internet or apps.

Tap  >  > **Downloads**.

E-mail

E-mail overview

You can register an email account to your device and then you can check and send emails from your device.



- If you use mobile data, you may be charged for data usage fee depending on your pricing plan. Consult with your service provider for more information.

Registering email accounts

When you use the email app for the first time, register your email account.

- 1 Tap > > **E-mail**.
- 2 Select an email service provider.
- 3 Enter your email address and password and then tap **NEXT** to register your account
 - To manually register an email account or to register email accounts not found in the list, tap **MANUAL SETUP**.

Managing email accounts


To view or edit your email account settings, tap > **Settings**.

- To add an account, tap **Add account**.





Opening another email account

If several email accounts are registered and you want to view another account, tap and select another one from the account list.

Checking email

- 1 Tap  and select a mail box.
- 2 Select an email from the email list.
 - The email message appears.

Sending email

- 1 Tap .
- 2 Enter the email address of a recipient.
- 3 Enter a subject and message.
 - To attach files, tap .
 - To access optional menu items, tap .
- 4 Tap  to send the email.

Contacts



Contacts overview

You can save and manage contacts.

Tap  >  > **Contacts**.


Adding contacts

Adding new contacts

- 1 On the contact list screen, tap .
- 2 Enter contact details and tap .

Importing contacts

You can import contacts from another storage device.

- 1 On the contact list screen, tap  > **Import/Export**.
- 2 Select the source and target locations of the contact you want to import, and then tap **NEXT**.
- 3 Select contacts and tap **OK**.



Searching for contacts

You can search for contacts by using one of the following options:


- On the contact list screen, enter a contact name in the search box.
- Scroll the contact list up or down.
- From the index of the contact list screen, tap the initial letter of a contact.

Contacts list

Editing contacts


- 1 On the contact list screen, select a contact.
- 2 On the contact detail screen, tap  and edit details.
- 3 Tap  to save changes.

Deleting contacts





- 1 On the contact list screen, tap and hold a contact.
- 2 Tap  > **Delete**.

Adding favourites

You can register frequently used contacts as favourites.

- 1 On the contact list screen, select a contact.
- 2 On the contact detail screen, tap .

Creating groups




- 1 On the contact list screen, tap  > **Groups** > .
- 2 Enter a new group name.
- 3 Tap , select contacts, then tap **OK**.
- 4 Tap  to save the new group.

Calendar

Calendar overview

You can use the calendar to manage events and tasks.

Adding events

- 1 Tap  >  > **Calendar**.
- 2 Select a date and then tap .
- 3 Enter event details and tap **SAVE**.
 - If you tap a date from the calendar and the date contains events, a pop-up window appears showing a list of the events. Tap an event from the pop-up window to view the event details.

Google apps

You can use Google apps by setting a Google account. The Google account registration window appears automatically when you use a Google app for the first time. If you do not have a Google account, create one from your device. For details on how to use an app, see the Help in the app.



• Some apps may not work depending on the area or service provider.

Google

Use search function provided by Google to search web sites and files stored on your device by entering keywords or via voice.

Gmail

Register your Google email account to your device to check or send email.

Maps

Find your location or the location of a place on the map. View geographical information.

YouTube

Search and play videos. Upload videos on YouTube to share them with people around the world.

Drive

Upload, save, open, share and organise files from your device. Files accessible from apps can be accessed from anywhere, including online and offline environments.

Play Music

Purchase music files from **Play Store**. Play music files saved on your device.

Play Movies & TV

Use your Google account to rent or purchase movies. Purchase content and play it anywhere.

Photos

View or share photos or albums saved on your device.



04


Phone Settings

Settings

You can customise the device settings in accordance with your preferences.

Tap  > **Settings**.




• Tap  and enter a keyword in the search box to access a setting item.

Wireless & networks

Wi-Fi


You can connect to nearby devices over a Wi-Fi network.

Connecting to a Wi-Fi network

- 1 On the settings screen, tap **Wi-Fi**.
- 2 Drag  to activate it.
 - Available Wi-Fi networks appear automatically.
- 3 Select a network.
 - You may need to enter the network's Wi-Fi password.
 - The device skips this process for previously accessed Wi-Fi networks. If you do not want to automatically connect to a certain Wi-Fi network, tap and hold the network and then tap **Forget network**.

Wi-Fi network settings

On the settings screen, tap **Wi-Fi**.

-  : Customise Wi-Fi network settings.

Wi-Fi Direct

You can connect your device to other devices that support Wi-Fi Direct to share data directly with them. You do not need an access point. You can connect with more than two devices by using Wi-Fi Direct.

- 1 On the settings screen, tap **Wi-Fi** > **⋮** > **Advanced** > **Wi-Fi Direct**.
 - Nearby devices that support Wi-Fi Direct automatically appear.
- 2 Select a device.
 - Connection occurs when the device accepts the connection request.



• The battery may drain faster when using Wi-Fi Direct.

Bluetooth

You can connect your device to nearby devices that support Bluetooth to exchange data with them. Connect your device to a Bluetooth headset and a keyboard. This makes it easier to control the device.

Pairing with another device

- 1 On the settings screen, tap **Bluetooth**.
- 2 Drag to activate it.
 - Available devices appear automatically.
 - To refresh the device list, tap **⋮** > **Refresh**.




• Only devices with the searching option enabled are displayed on the list.

- 3 Select a device from the list.
- 4 Follow the on-screen instructions to perform authentication.



• This step is skipped for previously accessed devices.

Sending data via Bluetooth


- 1 Select a file.
 - You can send multimedia files or contacts.
 -  **Bluetooth**.
- 2 Select a target device for the file.
 - The file is sent as soon as the target device accepts it.



• File sharing processes may differ depending on the file.

Data usage

Displays the data usage and device data usage limit. On the Settings screen, tap **Data usage**.


- Tap  to toggle your device data connection On or Off. This allows you to manage your device data usage. You can use a Wi-Fi network connection for data instead.

Airplane mode

You can turn off the call and mobile data functions. When this mode is on, functions that do not involve data, such as games and music playback, remain available. On the settings screen, tap **More > Airplane mode**.

Wi-Fi hotspot

You can set the device as a wireless router so that other devices can connect to the internet by using your device's mobile data.

- 1 On the settings screen, tap **More > Tethering & portable hotspot > Wi-Fi hotspot** and then drag  to activate it.
- 2 Tap **Set up Wi-Fi hotspot**, and enter the Network Name and password.
- 3 Turn on Wi-Fi on the other device, and select the name of the device network on the Wi-Fi list.


4 Enter the network password.



- This option uses mobile data and may incur data usage fees, depending on your pricing plan. Consult with your service provider for more information.
- More information is available at this web site:
<http://www.android.com/tether#wifi>

USB tethering

You can connect the device to another device via USB and share mobile data.


- 1 Connect your device and other devices via USB cable.
- 2 On the settings screen, tap **More > Tethering & portable hotspot > USB tethering** and then drag  to activate it.



- This option uses mobile data and may incur data usage fees, depending on your pricing plan. Consult with your service provider for more information.
- When connecting to a computer, download the USB driver from www.lg.com and install it on the computer.
- You cannot send or receive files between your device and a computer while USB tethering is turned on. Turn off USB tethering to send or receive files.
- Operating systems that support tethering are Window XP or higher, or Linux.

Bluetooth tethering

A Bluetooth-connected device can connect to the internet by using your device's mobile data.

- 1 On the settings screen, tap **More > Tethering & portable hotspot > Bluetooth tethering** and then drag  to activate it.
- 2 Turn on Bluetooth on both devices, and pair them.



- This option uses mobile data and may incur data usage fees, depending on your pricing plan. Consult with your service provider for more information.
- More information is available at this web site:
http://www.android.com/tether#Bluetooth_tethering

VPN

You can connect to a safe virtual network, such as an intranet. You can also manage connected virtual private networks.

Adding VPN

- 1 On the settings screen, tap **More > VPN**.
- 2 Tap **+**.
 - If the screen is not locked, a notification screen appears. Tap **OK** from the notification screen and lock the screen.
- 3 Enter VPN details and tap **SAVE**.

Configuring VPN settings

- 1 Tap a VPN from the **VPNS** list.
- 2 Enter the VPN user account details and tap **CONNECT**.

Mobile networks

You can customise mobile data settings.

- 1 On the settings screen, tap **More > Mobile networks**.
- 2 Customise the following settings:
 - **Data roaming:** Connect to data services when roaming.
 - **Preferred network type:** Select a network type.
 - **Access Point Names:** View or change the access point for using mobile data services. To change the access point, select a choice from the access point list.
 - **Network operators:** Search for network operators and connect automatically to a network.

Device

Display

You can customise detailed settings for each screen type.

On the settings screen, tap **Display** and customise the following settings:

- **Wallpaper:** Change the Home screen background theme.
- **Lock screen wallpaper:** Set your Lock screen wallpaper.
- **Brightness level:** Use the slide bar to change the device's screen brightness.
- **Adaptive brightness:** Set the device so that the screen brightness is automatically adjusted in accordance with the surrounding light intensity.
- **Sleep:** Automatically turn off the screen when the device is left idle for a specified period of time.
- **Daydream:** Display a screen saver when the device is connected to the holder or charging. Select a screen saver type to display.
- **Font size:** Change the font size.

- **When device is rotated:** Automatically rotate the screen according to the device's orientation.
- **More > KnockON:** Turn on or off the screen by tapping the screen twice.

Sound & notification

You can customise sound, vibrate and notification settings.

On the settings screen, tap **Sound & notification** and customise the following settings:

- **Sound:** Adjust the sound volume for various items.
- **Also vibrate for calls:** Set the device to vibrate and play a ringtone simultaneously.
- **Do not disturb:** Set the time, range and app type to receive notification messages. Receive notification messages only on particular days of the week.
- **Phone ringtone:** Select a ringtone for incoming calls.
- **Default notification ringtone:** Select a notification ringtone.
- **Other sounds:** Select a sound effect to play when you tap the dial pad, select an option, or lock or unlock the screen.
- **When device is locked:** Display or hide a notification message on the lock screen.
- **App notifications:** Select the apps that can show their notification messages on the screen, and set the priorities of those apps in regard to notification messages.
- **Notification access:** Apps cannot read notifications.
- **Do Not Disturb access:** Limit interruptions with Do not disturb mode.


Apps

You can view a list of installed apps. Shut down or delete apps, if necessary.

- 1 On the settings screen, tap **Apps**.
- 2 Select an app and perform actions.


Storage

You can view and manage internal storage on the device or storage space of the memory card.

- 1 On the settings screen, tap **Storage**.
- 2 Customise the following settings:
 - **Device storage** : View the total storage space and free space in the device's internal storage. View a list of apps in use and the storage capacity for each app.
 - **Portable storage**: View the total storage space and free space in the memory card. This option appears only when a memory card is inserted. To unmount the memory card, tap .

Battery

You can view the current battery information or turn on battery saver.

- 1 On the settings screen, tap **Battery**.
- 2 Customise the following settings:
 - **Use details** : View the battery usage details. To view more details, select a specific item.
 - **Battery saver**: Reduce battery consumption by cutting down some device settings, such as the display brightness, speed and vibration intensity. The status bar displays  when battery saver is on.

Memory

You can view the average amount of memory usage over a certain period of time and the memory occupied by an app.

- 1 On the settings screen, tap **Memory**.
- 2 Tap ▼ to set a time slot to retrieve data.

Personal

Location

You can customise how your location information is used by particular apps.

- 1 On the settings screen, tap **Location**.
- 2 Customise the following settings:
 - **Mode**: Select a method to provide your location information.
 - **Recent location requests**: View apps that recently requested location information.
 - **Google Location History**: Configure the Google location history settings.

Security

- 1 On the settings screen, tap **Security**.
- 2 Customise the following settings:
 - **Screen lock**: Customise lock screen settings.
 - **Automatically lock**: Automatically turn off the screen when the device is left idle for a specified period of time.
 - **Power button instantly locks**: Instantly lock the screen when the Power/Lock key is pressed.
 - **Lock screen message**: Display message on the lock screen.

- **Smart Lock:** Select trusted items so that if one of them occurs, the device is automatically unlocked.
- **Encrypt phone:** Set the device password for privacy. Create a PIN or password to enter each time the device is turned on.
- **Set up SIM card lock:** Lock or unlock the SIM card, or change the password (PIN).
- **Make passwords visible:** Display a password as you enter it.
- **Device administrators:** Allow privileges to restrict the control or use of the device to particular apps.
- **Unknown sources:** Allow the installation of apps from non-Play Store apps.
- **Storage type:** Displays the current storage type.
- **Trusted credentials:** Display trusted CA certificates.
- **Install from internal storage:** Tap to install a secure certificate.
- **Clear credentials:** Remove all certificates.
- **Trust agents:** View and use trust agents installed on the device.
- **Screen pinning:** Fix the app screen so that only the currently active app can be used.
- **Apps with usage access:** View details on usage of apps on the device.

Accounts

You can add or manage accounts, including a Google account. You can also sync particular apps or user information automatically.

- 1 On the settings screen, tap **Accounts**.
- 2 Customise the following settings:
 - **Auto-sync data:** Sync all the registered accounts automatically.
 - **Add account:** Add accounts.

Google

You can use Google settings to manage your Google apps and account settings.

On the settings screen, tap **Google**.

Language & input

You can customise language and keyboard settings for your device.

- 1 On the settings screen, tap **Language & input**.
- 2 Customise the following settings:
 - **Language:** Select a language to apply for the device.
 - **Spell checker:** Correct the spelling by using Google Spell Checker.
 - **Personal dictionary:** Manage some words in the Personal dictionary.
 - **Current Keyboard:** View the keyboard type currently in use. Select a keyboard to use when entering text.
 - **Android Keyboard (AOSP):** Customise Android keyboard settings.
 - **Google voice typing:** Configure the options for text dictation by Google.
 - **Text-to-speech output:** Configure the settings for text-to-speech output.
 - **Pointer speed:** Adjust the pointer speed of a mouse or trackpad.

Backup & reset

You can back up data saved on your device to another device or account.

Reset the device, if necessary.

- 1 On the settings screen, tap **Backup & reset**.
- 2 Customise the following settings:
 - **Back up my data:** Back up your app data, Wi-Fi password and other settings to the Google server.
 - **Backup account:** View the current backup account in use.

- **Automatic restore:** Automatically restore backup settings and data when reinstalling an app.
- **Network settings reset:** Reset Wi-Fi, Bluetooth and other network settings.
- **Factory data reset:** Reset all settings for the device and delete data.



- Resetting your device deletes all data on it. Enter your device name, Google account and other initial information again.

System

Date & time

You can customise date and time settings for your device.

- 1 On the settings screen, tap **Date & time**.
- 2 Customise the settings.

Accessibility

You can manage accessibility plug-ins installed on your device.

- 1 On the settings screen, tap **Accessibility**.
- 2 Customise the following settings:
 - **TalkBack:** Set the device to notify screen status or actions via voice.
 - **Switch Access:** Create key combinations to control your device.
 - **Captions:** Turn on the subtitle service when playing videos for the hearing impaired.
 - **Magnification gestures:** Zoom in or out by tapping the screen three times.
 - **Large text:** Change the font size.

- **High contrast text:** Set the text to a darker contrast.
- **Power button ends call:** End a call by pressing the Power/Lock Key.
- **Auto-rotate screen:** Automatically change the screen orientation according to the physical position of the device.
- **Speak passwords:** Enable to allow voice confirmations of characters when entering passwords.
- **Accessibility shortcut:** Quickly access a frequently used function.
- **Text-to-speech output:** Set the preferred speech engine and speech rate.
- **Touch & hold delay:** Adjust the touch input time.
- **Colour inversion:** Increase the display colour contrast for people with low vision.
- **Colour correction:** Adjust the display colour.

Printing

You can print the content of certain screens (such as web pages displayed in Chrome) to a printer connected to the same Wi-Fi network as your Android device.

About phone

You can view information about your device, such as the name, status, software details and legal information.

On the settings screen, tap **About phone** and view information.




05

Appendix

LG Language Settings

Select a language to use on your device.

- Tap  > **Settings** > **Language & input** > **Language**, and select a language.

Phone software update

LG Mobile Phone software update via Over-the-Air (OTA)

This feature allows you to conveniently update your phone's software to a newer version via OTA, without connecting using a USB cable. This feature will only be available if and when LG makes a newer firmware version available for your device.

First check the software version on your mobile phone:


Settings > **About phone** > **System updates**.



- Your personal data from internal phone storage—including information about your Google account and any other accounts, your system/application data and settings, any downloaded applications and your DRM licence—might be lost in the process of updating your phone's software. Therefore, LG recommends that you backup your personal data before updating your phone's software. LG does not take responsibility for any loss of personal data.
- This feature depends on the area or service provider.

FAQ

This chapter lists some problems you might encounter when using your phone. Some problems require you to call your service provider, but most are easy to fix yourself.

Message	Possible causes	Possible corrective measures
SIM card error	There is no SIM card in the phone or it is inserted incorrectly.	Make sure the SIM card is correctly inserted.
No network connection/ Dropped network	Signal is weak or you are outside the carrier network.	Move toward a window or into an open area. Check the network operator coverage map.
	Operator applied new services.	Check whether the SIM card is more than 6-12 months old. If so, change your SIM at your network provider's nearest branch. Contact your service provider.
Codes do not match	To change a security code, confirm the new code by re-entering it.	If you forget the code, contact your service provider.
	The two codes you entered do not match	
No applications can be set	Not supported by service provider or registration required.	Contact your service provider.
Downloaded application causes a lot of errors.	Remove the application.	<ol style="list-style-type: none">1. Tap  > Settings.2. Tap the Apps.3. Tap the app > UNINSTALL.

Message	Possible causes	Possible corrective measures
Calls not available	Dialling error	New network not authorised.
	New SIM card inserted.	Check for new restrictions.
	Pre-paid charge limit reached.	Contact service provider or reset limit with PIN2.
Phone cannot be turned on	On/Off key pressed too briefly.	Press the On/Off key for at least two seconds.
	Battery is not charged.	Charge battery. Check the charging indicator on the display.
Charging error	Battery is not charged.	Charge battery.
	Outside temperature is too hot or cold.	Make sure phone is charging at a normal temperature.
	Contact problem	Check the charger and its connection to the phone.
	No voltage	Plug the charger into a different outlet.
	Charger defective	Replace the charger
	Wrong charger	Use only original LG accessories.
Impossible to receive/ send SMS & photos	Memory full	Delete some data, such as applications or messages from your phone to make more memory available.

Message	Possible causes	Possible corrective measures
Files do not open	Unsupported file format	Check the supported file formats.
The screen does not turn on when I receive a call.	Proximity sensor problem	If you use a protection tape or case, make sure it has not covered the area around the proximity sensor. Make sure that the area around the proximity sensor is clean.
No sound	Vibration mode	Check the settings status in the sound menu to make sure you are not in vibration or Do not disturb mode.

Anti-Theft Guide

Set up your device to prevent other people from using it if it's been reset to factory settings without your permission. For example, if your device is lost, stolen, or wiped, only someone with your Google account or screen lock information can use the device.

All you need to make sure your device is protected is:

- Set a screen lock: If your device is lost or stolen but you have a screen lock set, the device can't be erased using the Settings menu unless your screen is unlocked.
- Add your Google account on your device: If your device is wiped but you have your Google account on it, the device can't finish the setup process until your Google account information is entered again.

After your device is protected, you'll need to either unlock your screen or enter your Google account password if you need to do a factory reset. This ensures that you or someone you trust is doing the reset.



- Do not forget your Google account and password you had added to your device prior to performing a factory reset. If you can't provide the account information during the setup process, you won't be able to use the device at all after performing the factory reset.

More information

Open Source Software Notice Information

To obtain the source code under GPL, LGPL, MPL, and other open source licenses, that is contained in this product, please visit <http://opensource.lge.com>.

In addition to the source code, all referred license terms, warranty disclaimers and copyright notices are available for download.

LG Electronics will also provide open source code to you on CD-ROM for a charge covering the cost of performing such distribution (such as the cost of media, shipping, and handling) upon email request to opensource@lge.com. This offer is valid for three (3) years from the date on which you purchased the product.

Trademarks

- Copyright ©2017 LG Electronics, Inc. All rights reserved. LG and the LG logo are registered trademarks of LG Group and its related entities.
- Google™, Google Maps™, Gmail™, YouTube™, Hangouts™ and Play Store™ are trademarks of Google, Inc.
- Bluetooth® is a registered trademark of Bluetooth SIG, Inc. worldwide.
- Wi-Fi® and the Wi-Fi logo are registered trademarks of the Wi-Fi Alliance.
- All other trademarks and copyrights are the property of their respective owners.

Declaration of conformity

Hereby, **LG Electronics** declares that this **LG-X230YK** product is in compliance with the essential requirements and other relevant provisions of Directive **2014/53/EU**.

A copy of the Declaration of Conformity can be found at
<http://www.lg.com/global/declaration>

This handset is not suitable for people who have a visual impairment due to the touch screen keyboard.



CE