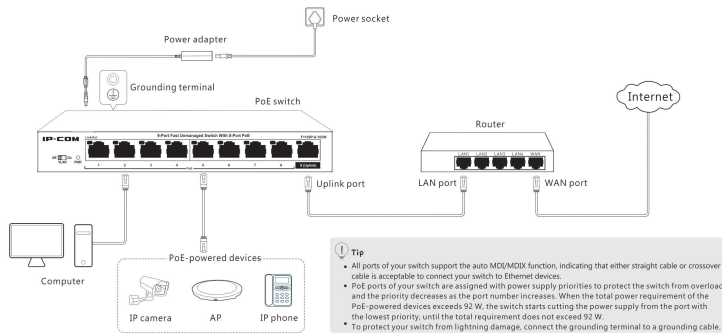


# IP-COM

## Quick Installation Guide

9-Port Fast Unmanaged Switch With 8-Port PoE Model: F1109P-B-102W

## Connecting your devices



LED Indicator	Status	Description
PWR	Solid on	The switch is connected to power supply properly.
	Off	The switch is disconnected from power supply or not properly connected to power supply.
Link/Act	Solid on	The port is connected properly.
	Blinking	Data is being transmitted over the port.
	Off	The port is disconnected or improperly connected.

## Package contents

- Switch \* 1
- Power adapter \* 1
- Quick installation guide \* 1

If any item is missing, damaged or incorrect, please keep the original packaging and contact the local reseller or distributor immediately.



CE Mark Warning

This is a Class A product. In a domestic environment, this product may cause radio interference, in which case the user may be required to take adequate measures.

The mains plug is used as disconnect device. The disconnect device shall remain readily operable.

NOTE: (1) The manufacturer is not responsible for any radio or TV interference caused by unauthorized modifications to this equipment. (2) To avoid unnecessary radio interference, it is recommended to use a shielded RJ45 cable.



FCC Statement

This equipment has been tested and found to comply with the limits for a Class A digital device, pursuant to Part 15 of the FCC Rules. These limits are designed to provide reasonable protection against harmful interference when the equipment is operated in a commercial environment. This equipment generates, uses, and can radiate radio frequency energy and, if not installed and used in accordance with the instruction manual, may cause harmful interference to radio communications. Operation of this equipment in a residential area is likely to cause harmful interference in which case the user will be required to correct the interference at his own expense.

This device complies with Part 15 of the FCC Rules. Operation is subject to the following two conditions: (1) this device may not cause harmful interference, and (2) this device must accept any interference received, including interference that may cause undesired operation.

Caution! Any changes or modifications not expressly approved by the party responsible for compliance could void the user's authority to operate the equipment.

NOTE: (1) The manufacturer is not responsible for any radio or TV interference caused by unauthorized modifications to this equipment. (2) To avoid unnecessary radio interference, it is recommended to use a shielded RJ45 cable.

## RECYCLING

This product bears the selective sorting symbol for Waste electrical and electronic equipment (WEEE). This means that this product must be handled pursuant to European directive 2012/19/EU in order to be recycled or dismantled or otherwise treated in the environment.

User has the choice to give his product to a competent recycling organization or to the retailer who provided the electrical or electronic equipment.

Caution: Adapter Model: BND38-A10151 Manufacturer: SHENZHEN HEWESHIEN NETWORK TECHNOLOGY CO., LTD. Input: 100 ~ 240 V AC 50/60 Hz, 1.6 A Output: 51 V<sup>±</sup> 2 A DC Voltage

Producto	NOMBRE DEL PRODUCTO: Switch No administrable de 9 puertos Fast Ethernet con 8 puertos PoE
Alimentador de Energía: Alimentación: 100 ~ 240 V Ca 50/60 Hz, 1.6 A	
PAIS DE ORIGEN: CHINA	

LA OPERACION DE ESTE DISPOSITIVO ESTA SUJETA A LAS SIGUIENTES CONDICIONES:  
a) Es posible que este equipo o dispositivo no cause interferencia perjudicial.  
b) Este equipo o dispositivo debe aceptar cualquier tipo de interferencia, incluyendo la que puede causar su operacion no deseada.



Copyright ©2018 IP-COM Networks Co., Ltd. All rights reserved. This documentation (including pictures, images, and product specifications, etc.) is for reference only. To improve internal design, operational function, and/or reliability, IP-COM reserves the right to make changes to the products described in this document without obligation to notify any person or organization of such revisions or changes.

Technical Support Address: Room 101, Unit A, First Floor, Tower E3, NO.101, Zhonghuanhuan Road, Nanshan District, Shenzhen, China. 518052 Tel: (86)755 2763 3089 Email: info@ip-com.com.cn Website: http://www.ip-com.com.cn

## Working mode introduction

The PoE switch has two modes: VLAN Off and VLAN On. Use the slide switch to set the PoE switch to your required mode according to the following descriptions. VLAN Off: Default mode of the PoE switch. In this mode, all ports can communicate with each other. VLAN On: In this mode, ports 1 to 8 of F1109P-B-102W can communicate with port 9 but cannot communicate with each other. You can enable this mode to reduce

## Specifications

Model	F1109P-B-102W
Standards	IEEE 802.3, IEEE 802.3u, IEEE 802.3z, IEEE 802.3x, IEEE 802.3k
10/100Mbps RJ45 port	9
Working mode	VLAN Off, VLAN On
Switching capacity	1.8 Gbps
Store-and-forward	Supported
MAC address learning	Auto learning & auto aging
MAC address table	2 K
PoE standard	IEEE 802.3af, IEEE 802.3at
PoE port	1 - 8
Maximum power output of a single port	30 W
Maximum power output of the switch	92 W
PoE power cable core	8 cores: voltage of cores 1, 2, 4, 5 is +, and cores 3, 6, 7, 8 is -.
Lightning protection	Port: 6 kV (for port 9) Power supply: Common mode: 4 kV Differential mode: 4 kV
Operating environment	Temperature: (0 ~ 40) °C Humidity: (10% ~ 90%) RH non-condensing
Storage environment	Temperature: (-40 ~ 70) °C Humidity: (5% ~ 95%) RH non-condensing
Power supply	Input: 100 ~ 240 V ~ 50/60 Hz 1.6 A Output: 51 V DC 2 A
Dimension	177.5 mm * 104.1 mm * 26 mm
Transmission media	Ethernet: CAT5 UTP/STP cable or better Fast Ethernet: CAT5 UTP/STP cable or better

## Deutsch

LED-Anzeige	Status	Beschreibung
PWR	Leuchtet	Das Gerät ist korrekt an eine Stromversorgung angeschlossen.
	Aus	Der Switch ist von der Stromversorgung getrennt oder nicht ordnungsgemäß angeschlossen.
Link/Act	Leuchtet	Der Port ist korrekt verbunden.
	Blinkt	Die Daten werden über den Port übertragen.
	Aus	Der Port ist nicht verbunden oder falsch angeschlossen.

## Einführung in die Betriebsmodi

Der PoE-Switch hat zwei Modi: VLAN Off und VLAN On. Schalten Sie den PoE-Switch über den Schieberegler in den gewünschten Modus. Wählen Sie den Modus gemäß der nachfolgenden Beschreibungen aus. VLAN Off: Ist der Standardmodus des PoE-Switches. In diesem Modus können alle Ports des Switches untereinander kommunizieren. VLAN On: In diesem Modus können die Ports 1 bis 8 des F1109P-B-102W mit dem Port 9 kommunizieren aber nicht untereinander. Verwenden Sie diesen Modus, um Broadcast-Sturm zu reduzieren oder den DHCP-Broadcast zu isolieren.

## Б ъ л г а р с к и

LED индикатор	Статус	Описание
PWR	Без преликване	Преликването е свързано правилно с електрозахранването.
	Изключен (Off)	Преликването е изключено от захранването или не е свързано правилно с него.
Link/Act	Без преликване	Портът е свързан правилно.
	Мигаща	Данните се предават през порта.
	Изключен (Off)	Портът е преликван или неправилно свързан.

## Введение в работния режим

У коммутатора с PoE есть два режима: **VLAN Off** и **VLAN On**. Используйте переключатель для переключения коммутатора с PoE в нужный режим, выбравший на основе описания. **VLAN Off**: Режим по умолчанию коммутатора с PoE. В этом режиме все порты могут подключаться друг к другу и имеют одинаковый приоритет. **VLAN On**: В этом режиме порты от 1 до 8 F1109P-B-102W могут подключаться к порту 9, но не могут подключаться друг к другу. В этом режиме можно переить, чтобы уменьшить broadcast шторм и изолировать DHCP broadcast.

## Français

Indicateur LED	Statut	Description
PWR	Solide en	Le dispositif est branché correctement à l'alimentation.
	Eteint	Le commutateur est déconnecté de la source d'alimentation ou n'est pas connecté à une source d'alimentation.
Link/Act	Solide en	Le port est correctement connecté.
	Cignotant	Les données sont transmises à travers le port.
	Eteint	Le port est déconnecté ou n'est pas correctement connecté.

## Introduction du mode de fonctionnement

Le commutateur PoE a deux modes: **VLAN Off**, et **VLAN On**. Utilisez le glissière pour régler le commutateur PoE au mode requis selon les descriptions suivantes. **VLAN Off**: Mode par défaut du commutateur PoE. Dans ce mode, tous les ports du commutateur peuvent communiquer entre eux. **VLAN On**: Dans ce mode, les ports 1 à 8 de F1109P-B-102W peuvent communiquer avec le port 9 mais pas entre eux. Vous pouvez activer ce mode pour réduire la diffusion et isoler la diffusion DHCP.

## Română

Indicator LED	Stare	Descriere
PWR	Rămăne aprins	Dispozitivul este conectat corect la sursa de alimentare.
	Opri	Switch-ul este deconectat de la sursa de alimentare sau nu este conectat la o sursă de alimentare.
Link/Act	Rămăne aprins	Portul corespunzător este conectat corect.
	Luminează intermitent	Datele sunt transmise prin port.
	Opri	Portul este deconectat sau nu este conectat corect.

## Prezentarea modurilor de lucru

Switch-ul PoE are două moduri: **VLAN Off** și **VLAN On**. Setati switch-ul PoE in modul dorit in functie de comutator, conform urmatoarelor descrieri. **VLAN Off**: Modul implicit al switch-ului PoE. In acest mod, toate porturile pot comunica intre ele. **VLAN On**: In acest mod, porturile 1-8 ale F1109P-B-102W pot comunica cu portul 9 dar nu pot comunica intre ele. Puteti utiliza acest mod pentru a reduce broadcast storm și pentru a izola DHCP broadcast.

## Italiano

Indicatore LED	Stato	Descrizione
PWR	Spento	L'interruttore è scollegato dall'alimentazione o non è collegato.
	Accensione	I dati vengono trasmessi attraverso la porta.
Link/Act	Spento	La porta è scollegata o collegata in modo non corretto.

## Introduzione modalità di lavoro

Lo switch PoE presenta due modalità: **VLAN Off**, e **VLAN On**. Utilizzare l'interruttore scorrevole per regolare l'interruttore PoE nella modalità richiesta secondo le seguenti indicazioni. **VLAN Off**: Modalità predefinita dell'interruttore PoE. In questa modalità tutte le porte dello switch possono comunicare tra loro. **VLAN On**: In questa modalità, le porte 1-8 del F1109P-B-102W possono comunicare con la porta 9 ma non tra di loro. Si può utilizzare questa modalità per ridurre il broadcast

## Русский

Светодиодный индикатор	Статус	Описание
PWR	Горит постоянно	Коммутатор подключен к источнику питания.
	Не горит	Коммутатор отключен от источника питания или подключен к нему неправильно.
Link/Act	Горит постоянно	Порт подключен правильно.
	Мигает	Через порт осуществляется передача данных.
	Не горит	Порт не подключен или подключен неправильно.

## Обзор режимов работы

У коммутатора с PoE есть два режима: **VLAN Off** и **VLAN On**. Используйте переключатель для переключения коммутатора с PoE в нужный режим, выбравший на основе описания. **VLAN Off**: Режим по умолчанию коммутатора с PoE. В этом режиме все порты могут подключаться друг к другу и имеют одинаковый приоритет. **VLAN On**: В этом режиме порты от 1 до 8 F1109P-B-102W могут подключаться к порту 9, но не могут подключаться друг к другу. В этом режиме можно переить, чтобы уменьшить broadcast шторм и изолировать DHCP broadcast.

## Español

Indicador LED	Estado	Descripción
PWR	Encendido	El dispositivo está conectado a la fuente de alimentación
	Apagado	El switch está desconectado de una fuente de alimentación o no está conectado a una fuente de alimentación.
Link/Act	Sólido en	El puerto está correctamente conectado.
	Cignotante	Los datos se transmiten a través del puerto.
	Apagado	El puerto está desconectado o no está correctamente conectado.

## Introducción al Modo Trabajo

El switch PoE dispone de dos modos: **VLAN Off** y **VLAN On**. Use el interruptor para establecer el switch PoE en el modo deseado de acuerdo con las descripciones siguientes. **VLAN Off**: Modo predefinido del switch PoE. En este modo, todos los puertos del comutador pueden comunicarse entre sí. **VLAN On**: En este modo, los puertos 1 a 8 del F1109P-B-102W pueden comunicarse con el puerto 9 pero no pueden comunicarse entre sí. Puede usar este modo para reducir la

## Polski

Kontrolka LED	Stan	Opis
PWR	Ciągle świeci	Urządzenie jest prawidłowo podłączone do źródła zasilania.
	Wyłącz	Urządzenie jest odłączone od źródła zasilania lub nie zostało do niego poprawnie podłączone.
Link/Act	Ciągle świeci	Gniazdo jest połączone poprawnie.
	Miga	Port obsługuję przesyłanie danych.
	Wyłączone	Port jest odłączony lub niepoprawnie podłączony.

## Wprowadzenie do trybów pracy

Switch PoE może działać w dwóch trybach: **VLAN Off**, i **VLAN On**. Za pomocą przełącznika włącz w switchu PoE wymagany tryb pracy. Opis trybów znajdują się poniżej. **VLAN Off**: Tryb domyślny switcha PoE. W tym trybie wszystkie porty switcha mogą się ze sobą komunikować. **VLAN On**: W tym trybie porty od 1 do 8 urządzenia F1109P-B-102W mogą

## Português

Indicador LED	Estado	Descrição
PWR	Off (Desligado)	O interruptor é desligado da fonte de alimentação ou não está ligado corretamente.
	Sólido ativado	A porta está ligada corretamente.
Link/Act	A piscar	Os dados estão a ser transmitidos pela porta.
	Off (Desligado)	A porta está desconectada ou indevidamente conectada.

## Introdução ao Modo de Trabalho

O interruptor PoE tem dois modos: **VLAN Off** e **VLAN On**. Use o controle deslizante para definir o interruptor PoE para o modo necessário de acordo com as seguintes descrições. **VLAN Off**: Modo padrão do interruptor PoE. Neste modo, todas as portas do switch podem se comunicar entre si. **VLAN On**: Neste modo, as portas 1 a 8 do F1109P-B-102W podem comunicar com a porta 9 mas não podem comunicar entre si. Pode utilizar este modo para reduzir os

## Magyar

LED vizsgálat	Státusz	Leírás
PWR	Folyamatosan világít	A készülék helyesen van az energiellátáshoz csatlakoztatva.
	Ki	A váltó nincs, vagy nem megfelelően van csatlakoztatva a tápegységhez.
Link/Act	Folyamatosan világít	Az egyező port helyesen van csatlakoztatva.
	Villog	Adatátvitel folyamatosan a porton keresztül.
	Ki	A port nincs, vagy nem megfelelően van csatlakoztatva.

## Bevezetés: üzemmódok

A PoE kapcsolók két üzemmódot rendelkeznek: **VLAN Off** (VLAN kikapcsolva) és **VLAN On** (VLAN bekapcsolva). A csúszkaszegéllyel állítsa a PoE kapcsolót a kívánt üzemmódba az alábbi leírások szerint. **VLAN Off**: A PoE kapcsoló alapértelmezett üzemmóda. Ebben a módban a váltó összes portja tud kommunikálni egymással. **VLAN On**: Ebben az üzemmódban a F1109P-B-102W 1-8-es portja képes kommunikálni az 9-5s porttal, de nem képesek kommunikálni egymással. Ezzel az üzemmóddal csökkentheti a szörfözési viharokat, és elkülönítheti a DHCP-szórót.